

2002 SUBARU OUTBACK



SUBARU ENGINEERING IS NOT ABOUT CARS. IT'S ABOUT PEOPLE.

EVERY SUBARU IS DESIGNED AROUND THE SIMPLE IDEA THAT YOU

SHOULD BE ABLE TO GET WHERE YOU WANT TO GO QUICKLY,

COMFORTABLY AND SAFELY. REGARDLESS OF WEATHER AND ROAD

CONDITIONS. THE DRIVING EXPERIENCE SHOULD BE AS SATISFYING

AS IT IS STRESS-FREE. TO DO THIS REQUIRES EXCEPTIONAL CONTROL.

THAT'S WHY EVERY SUBARU WE MAKE HAS AN ADVANCED FULL-

TIME, ALL-WHEEL DRIVING SYSTEM FOR MAXIMUM TRACTION.

A VEHICLE IN CONTROL IS A SAFE VEHICLE, ONE THAT INSPIRES

CONFIDENCE IN ANY SITUATION, AND IS THE HEART OF THE

SUBARU PHILOSOPHY OF ACTIVE DRIVING, ACTIVE SAFETY.

2002 Subaru



TABLE OF CONTENTS

02 ALL-WHEEL DRIVING SYSTEM

04 OUTBACK SPORT

06 OUTBACK WAGON

08 OUTBACK LIMITED SEDAN AND WAGON

10 OUTBACK INTERIOR FEATURES

OUTBACK

12 OUTBACK H6-3.0 L.L.BEAN EDITION

14 OUTBACK H6-3.0 VDC SEDAN AND WAGON

16 SAFETY & SECURITY

18 ACCESSORIES

22 SPECIFICATIONS/COLORS & FABRICS

Seven years ago we introduced the World's First Sport Utility Wagon, the Outback. It's proof that the ruggedness of a sport utility can happily coexist with car-like handling, comfort and safety. The key to our success is the superior control of the Subaru All-Wheel Driving system. That means you can tackle challenging conditions while still enjoying the security, responsiveness and control found in every Subaru, without the compromises found in other sport utility designs. It's the reason the Subaru Outback is the best selling wagon in America.*

Outback Sport/Outback/Outback H6-3.0



The Beauty of All-Wheel Drive®

*Based on R.L. Polk and Co. registration statistics as of 12/31/2000. Also includes Legacy models.



Outback H6-3.0 VDC shown in Black Granite Pearl/Titanium Pearl

“...THERE WAS NEVER A DOUBT THAT WHEN YOU HELD THE OUTBACK'S STEERING WHEEL, YOU HELD THE REINS.”

TRUCK TREND, DECEMBER 2000

WHAT “TRACTION CONTROL” WANTS TO BE WHEN IT GROWS UP.

Four little patches of tire between you and the road. Why not use them all? Subaru All-Wheel Drive constantly monitors and smoothly adjusts power to provide the best traction in any weather. For ultimate control, Subaru AWD drives all four wheels all the time, unlike some AWD systems that drive only two wheels until they detect a loss of traction and then respond or must be engaged by the driver.

To further enhance the traction of AWD, all Outback models except Outback Sport and H6-3.0 VDC feature a standard limited-slip rear differential that distributes power between the rear wheels for maximum traction. H6-3.0 VDC models feature an advanced Vehicle Dynamics Control (VDC) system that works in conjunction with Variable Torque Distribution (VTD) AWD for exceptional vehicle control.



The 4-wheel, fully independent suspension has been designed to be extremely strong, yet supple and responsive on the road. In front, MacPherson struts use L-shaped lower arms for added rigidity and durability. Liquid-filled suspension bushings absorb unwanted vibration.



The Outback Sport features a rugged dual-link suspension. All other Outback models feature a rear multi-link suspension designed for exceptional stability – and to help keep handling consistent whether the vehicle is heavily loaded or not. Front and rear stabilizer bars help keep body roll in check.



When braking, the vehicle's weight shifts forward, reducing rear-wheel traction. Subaru AWD can respond by sending power to the front wheels for better overall steering control and braking performance.



When accelerating, the vehicle's weight shifts rearward, reducing traction to the front wheels. In response, Subaru AWD can smoothly direct power to the rear wheels where there is more traction.

THE HEART OF EVERY SUBARU IS THE SYMMETRICAL AWD SYSTEM. THE ENGINE, TRANSMISSION, DRIVESHAFT AND REAR DIFFERENTIAL ARE LAID OUT IN A STRAIGHT LINE. BY CLOSELY BALANCING THE BODY LEFT TO RIGHT AND KEEPING COMPONENTS CLOSE TO THE CHASSIS' CENTERLINE, THE OUTBACK AND OUTBACK SPORT ARE EXCEPTIONALLY AGILE, YET EXTREMELY STABLE. THE BOXER ENGINE'S COMPACT DIMENSIONS ALLOW IT TO BE PLACED FURTHER BACK IN THE CHASSIS, REDUCING WEIGHT AHEAD OF THE FRONT WHEELS ALLOWING QUICKER REACTION TO STEERING INPUTS, AND ITS LOWER CENTER OF GRAVITY SIGNIFICANTLY ENHANCES STABILITY IN TURNS AND EVASIVE MANEUVERS.



Subaru AWD has conquered the unique demands of rallying, where a vehicle must be extremely responsive and maneuverable, yet completely stable and predictable.



Going into a corner, rear-wheel drive cars tend to oversteer. The rear wheels can break loose, sending the car into a spin. Subaru AWD tracks smoothly through the curve, entering with the right amount of power to the front wheels.



Coming out of a corner, a front-wheel drive car tends to understeer, or plow toward the outside of a curve when accelerating. With AWD, a Subaru vehicle exits a curve with the right amount of power to the rear wheels.



When going uphill, the vehicle's weight shifts rearward, reducing traction to the front wheels. In response, Subaru AWD can smoothly direct power to the rear wheels where there is more traction.



When going downhill, the vehicle's weight shifts forward, reducing rear-wheel traction. Subaru AWD can respond by sending power to the front wheels for better overall steering control and braking performance.

“THE IMPREZA OUTBACK SPORT OFFERS A UNIQUE COMBINATION OF UTILITY AND FUN.”

EDMUNDS.COM

NO IDENTITY CRISIS HERE.



Go places you never thought you'd go. Carry things you never thought you would. The rear bumper step pad protects the finish when loading. The removable cargo tray is handy, especially for sloppy stuff. Cargo tie-down hooks help keep things in their original and upright position, and a standard cargo cover gives added security.

04

These days, a lot of manufacturers are making cars that pretend to be trucks and trucks that pretend to be cars, and neither is doing a particularly good job of it. But there is a better choice, the Outback Sport. A purpose-built vehicle with Subaru AWD, a more powerful 2.5-liter engine, and a rugged, yet supple suspension to get you just about anywhere active people want to go. With standard air conditioning, cruise control, power windows, door locks and mirrors, AM/FM audio system with single-disc CD player—even an available auto-dimming rearview mirror with built in compass—getting there is more than half the fun.

Outback Sport



Comfort and flexibility are key in Outback Sport. The height-adjustable driver's seat and tilt steering column help tailor your driving position. The 60/40 split fold-down rear seatback gives multiple options for carrying people and goods and folds flat for maximum cargo capacity.



Outback Sport shown in Midnight Black Pearl/Graystone Metallic

THE IMPREZA OUTBACK SPORT HAS A SPECIAL LOOK TO MATCH ITS UNIQUE ABILITIES WITH AN EXCLUSIVE PAINT SCHEME, INTERIOR FABRIC AND 16-INCH ALUMINUM-ALLOY WHEELS. STANDARD ROOF RAILS WITH CROSS BARS CAN CARRY A MULTITUDE OF ITEMS. MULTI-REFLECTOR HALOGEN HEADLIGHTS AND LARGE DIAMETER FOG LIGHTS PROVIDE SUPERIOR ILLUMINATION TO SEE WHAT'S AHEAD. THE REAR WINDOW WIPER/WASHER MAKES SURE YOU CAN SEE WHAT'S BEHIND AS WELL. SUBARU ALL-WHEEL DRIVE HELPS MAKE SURE YOU GET WHERE YOU'RE GOING, AND THE NEW DESIGN, ALONG WITH AN AVAILABLE REAR SPOILER, MEANS YOU'LL ARRIVE IN STYLE.



“IT COMBINES SUV-LIKE SPACE, CARLIKE ROAD MANNERS, AND A CHARISMATIC APPEARANCE.”

AUTOMOBILE MAGAZINE, FIELD GUIDE 2000

SNOW MOBILE



Outback is powered by a 2.5-liter, 16-valve horizontally opposed boxer engine producing 165 horsepower and 166 lb.-ft. of torque for low-end power. The engine's lower center of gravity design means reduced body roll in turns for secure handling.

06

Outback helps you over life's little moguls. Outstanding comfort is provided by standard air conditioning; power windows, door locks and mirrors; cruise control and AM/FM/Weatherband audio system with cassette player. Even a 6-way power driver's seat with manual lumbar adjustment and a convenient 60/40 split fold-down rear seatback. Little gets in the way, with a standard heavy-duty raised suspension, 7.3 inches of ground clearance, full-time AWD, advanced 4-channel/4-sensor ABS and a limited-slip rear differential for added grip. For cooler climates, the available All-Weather Package features heated exterior mirrors, dual-mode heated front seats and a windshield wiper de-icer.

Outback Wagon



Thoughtful touches are always appreciated. The overhead console features map lights and a swing down bin for sunglasses. Time and ambient temperature readings are easily located at a glance. An additional 12-volt power outlet is located in the cargo area for added utility.



Outback Wagon shown in Wintergreen Metallic/Titanium Pearl

RUGGED GOOD LOOKS. TITANIUM PEARL COLOR BODY-SIDE CLADDING AND SPLASH GUARDS PROVIDE PROTECTIVE BARRIERS FROM THE ELEMENTS. THE REAR BUMPER FEATURES A STEP PAD TO PROTECT THE FINISH WHEN LOADING AND A REMOVABLE CARGO MAT TO PROTECT THE INTERIOR. SPORTY 5-SPOKE 16-INCH ALUMINUM-ALLOY WHEELS FEATURE SUBSTANTIAL 225/60 SERIES RAISED WHITE LETTER M+S ALL-SEASON RADIALS. STANDARD MULTI-REFLECTOR HALOGEN HEADLIGHTS AND FOG LIGHTS WITH STONE SHIELDS LIGHT YOUR WAY AHEAD, WHILE A REAR WIPER/WASHER HELPS YOU SEE BEHIND. STANDARD ROOF RAILS WITH CROSS BARS ENHANCE ITS GENEROUS CARGO-CARRYING ABILITIES.



“...THE OUTBACK MAKES SO MUCH SENSE – SOME SUV ATTITUDE AND CARGO ROOM, AND A CARLIKE DRIVING EXPERIENCE.”

MOTOR TREND, NOVEMBER 2000

OFF THE BEATEN PATH WITHOUT THE BEATING.



Outback Limited Wagon rewards you with the luxuries of the Limited Sedan and the added practicality only a wagon can provide.

There's often a fork in the road between sedan people and wagon people. Fortunately, with Outback Limited, there's plenty for them to agree on. Standard leather-trimmed upholstery and a premium AM/FM/ Weatherband/ cassette audio system with single-disc CD player and 6 speakers (8 speakers on wagon models) mean supreme comfort whichever model you choose. Sedan models add a rear seat center armrest with trunk pass-through, perfect for carrying oversized items. And along with the safety and control of full-time All-Wheel Drive, standard front seat side-impact air bags help protect you during a side collision.*

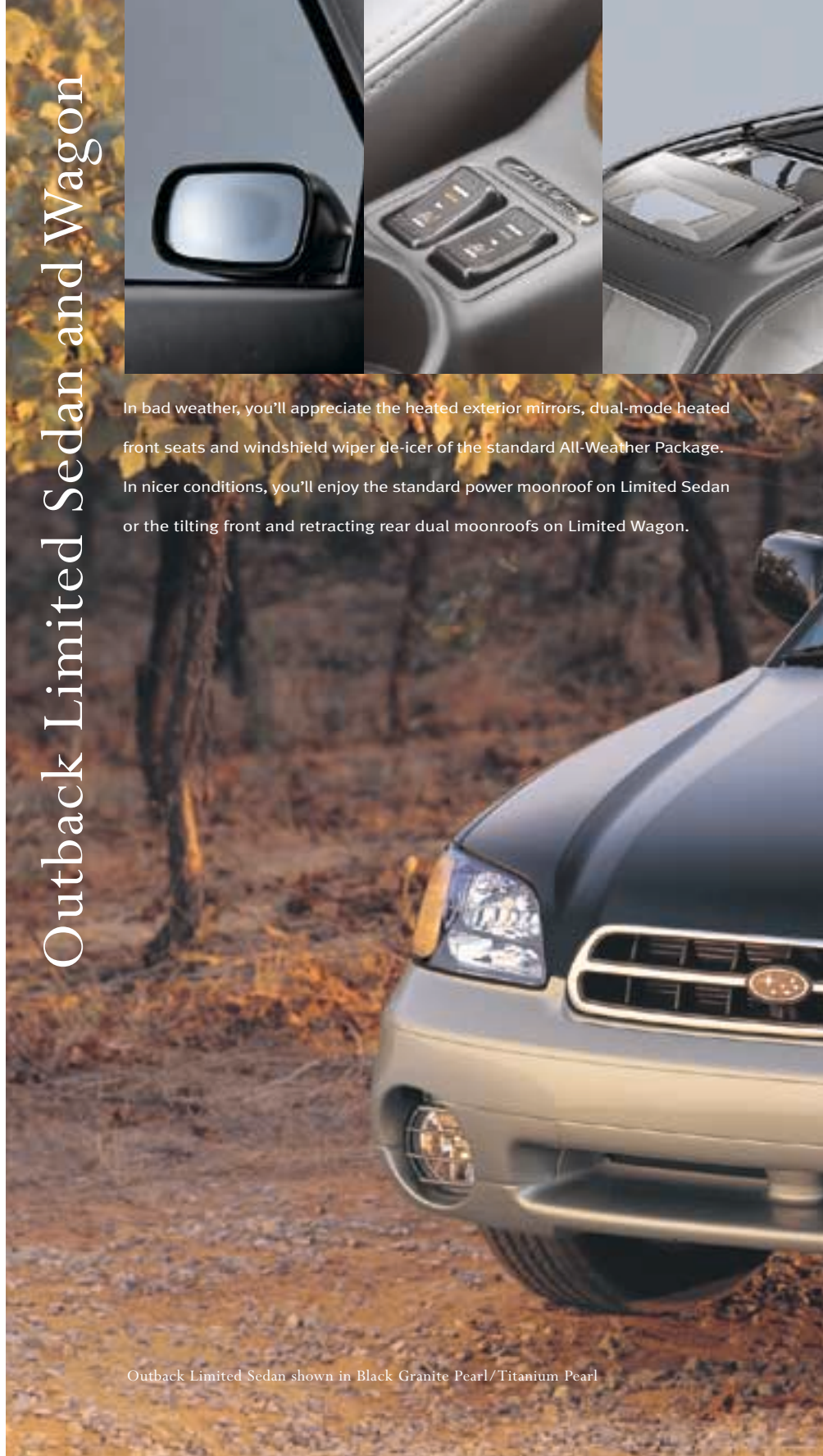
08

*Seatbelts must be worn at all times. Children should always be properly restrained in the rear seat.

Outback Limited Sedan and Wagon



In bad weather, you'll appreciate the heated exterior mirrors, dual-mode heated front seats and windshield wiper de-icer of the standard All-Weather Package. In nicer conditions, you'll enjoy the standard power moonroof on Limited Sedan or the tilting front and retracting rear dual moonroofs on Limited Wagon.



Outback Limited Sedan shown in Black Granite Pearl/Titanium Pearl

FOR THOSE DESIRING IMPRESSIVE LUXURY WITHOUT SACRIFICING RUGGEDNESS, LOOK NO FURTHER THAN OUTBACK LIMITED. AVAILABLE IN 4-DOOR SEDAN AND WAGON BODY STYLES, THE OUTBACK LIMITED TRAVELS THE HIGH ROAD, WITH STYLISH 16-INCH ALLOY WHEELS FEATURING GOLD ACCENTS FOR A RICH, UPSCALE LOOK, ALONG WITH BODY COLOR MIRRORS AND DOOR HANDLES. TINTED GLASS ALL AROUND GIVES A SOPHISTICATED FEEL. EVEN THE POWER GLASS MOONROOF—DUAL MOONROOFS ON THE WAGON—IS TINTED TO KEEP YOU COOL. AND FOR INCREASED VISIBILITY, THE WINDSHIELD WIPERS FEATURE A CONVENIENT VARIABLE INTERMITTENT SETTING.



OUTBACK INTERIOR DESIGN MEANS COMFORT, LUXURY, PRACTICALITY AND SAFETY ALL WORK TOGETHER. THE LARGE INSTRUMENTS ARE EASILY READ, CONTROLS ARE LOGICALLY PLACED AND EASY TO ADJUST. HEIGHT-ADJUSTABLE FRONT HEAD RESTRAINTS AND SEATBELT SHOULDER ANCHORS MAKE SURE YOU'RE COMFORTABLE AND PROPERLY SECURED. THE AVAILABLE 4-SPEED AUTOMATIC FEATURES A GATED SHIFTER DESIGN THAT MAKES IT EASY TO SELECT THE RIGHT GEAR. LUXURIES INCLUDE STANDARD AIR CONDITIONING, TILT STEERING COLUMN AND POWER WINDOWS, MIRRORS AND DOOR LOCKS. AND EVERYONE WINS WITH STANDARD LEATHER-TRIMMED UPHOLSTERY ON OUTBACK LIMITED AND H6-3.0 MODELS.

INNER PEACE.



Finding that perfect position is easy on Outback and Outback Limited, thanks to a standard 6-way power driver's seat. Outback H6-3.0 models add a power reclining feature for the indulgence of an 8-way power driver's seat. All models include a manually adjusted lumbar support.



All wagon models feature four tie-down hooks in the cargo area to help secure your gear. A removable rubber cargo mat helps keep mess to a minimum.



Four cup holders* on the Outback include a convenient rear design that adjusts for a variety of drink sizes and folds out of sight when not in use. Oversized center console cup holders are perfect for larger bottles.

“THE OUTBACK HAS A WONDERFUL, UPRIGHT DRIVING POSITION AND EXCELLENT SEATS THAT ARE FIRM AND SUPPORTIVE...”

CAR AND DRIVER, OCTOBER 2000



Front seatback pockets* can accommodate an assortment of items. The mesh design makes it easy to find what you're looking for.



Outback H6-3.0 Wagon models enjoy a comfortable fold-down rear seat center armrest. All Outback Sedan models add a trunk pass-through that's perfect for carrying oversized items.

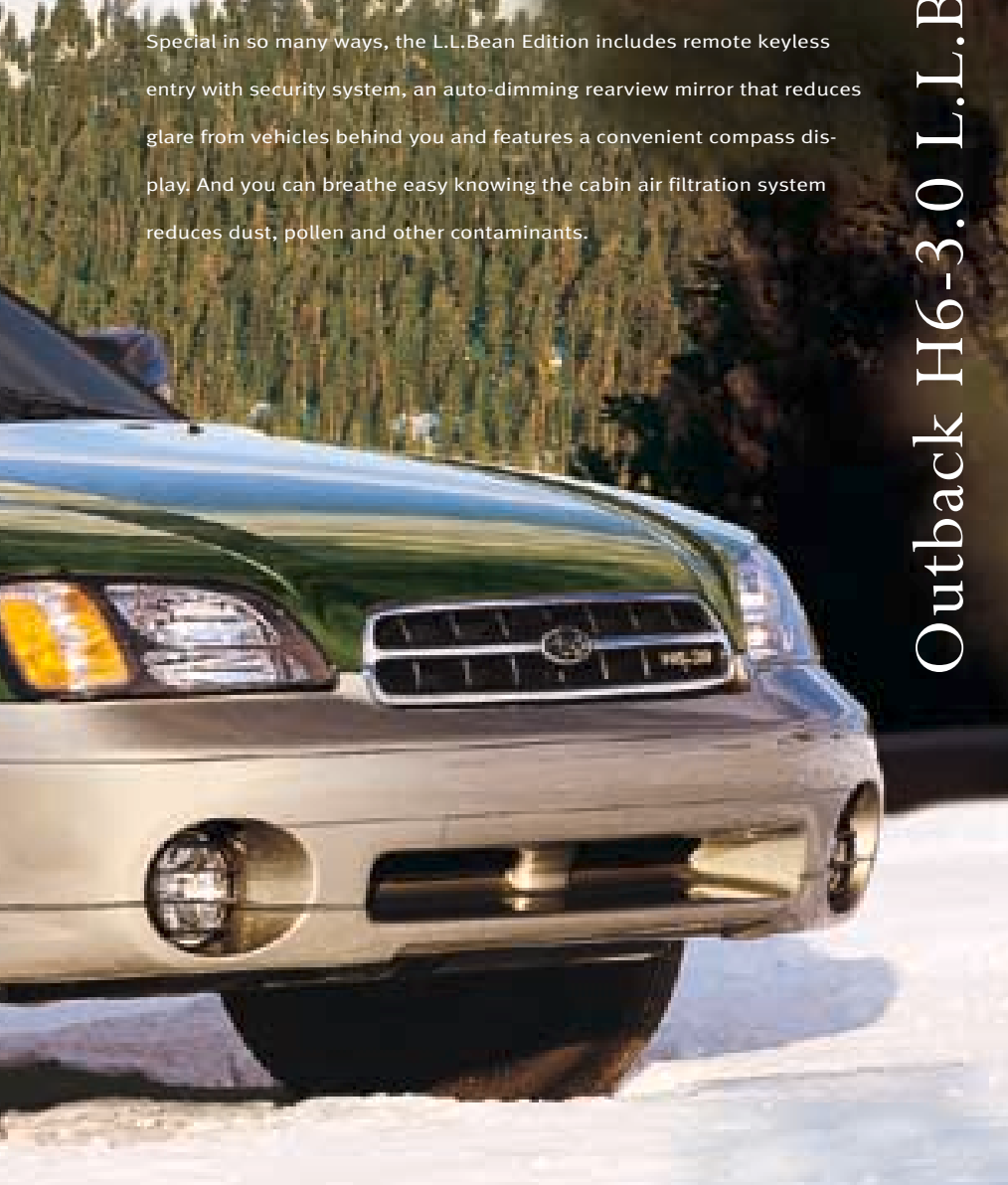
*Excluding Outback Sport.

OUTFITTED FOR ADVENTURE, THIS VEHICLE IS DRESSED IN THE UPSCALE YET RUGGED MANNER THAT HAS MADE BOTH L.L.BEAN AND OUTBACK LEGENDARY. TASTEFUL BADGING HIGH-LIGHTS 16-INCH ALUMINUM-ALLOY WHEELS DESIGNED EXCLUSIVELY FOR H6-3.0 WITH RAISED WHITE LETTER M+S ALL-SEASON RADIALS. THE EXTERIOR IS OFFERED IN A PALETTE OF RICH PEARLESCENT AND METALLIC COLORS THAT NOT ONLY SET OFF THE TITANIUM PEARL BODY-SIDE CLADDING, IT PERFECTLY COMPLEMENTS THE SPECIAL TWO-TONE LEATHER-TRIMMED UPHOLSTERY UNIQUE TO THIS MODEL. PRACTICAL AS WELL AS HANDSOME, STANDARD ROOF RAILS WITH CROSS BARS OFFER ADDED CARRYING CAPACITY FOR JUST ABOUT ANYTHING.





Special in so many ways, the L.L.Bean Edition includes remote keyless entry with security system, an auto-dimming rearview mirror that reduces glare from vehicles behind you and features a convenient compass display. And you can breathe easy knowing the cabin air filtration system reduces dust, pollen and other contaminants.



Outback H6-3.0 L.L.Bean Edition

“SUBARU’S NEW OUTFITTER SIGNATURE SERIES MODEL BOASTS LOADS OF COMFORT AND CONVENIENCE STANDARDS AS WELL AS THE FIRM’S NEW 212-HP FLAT-SIX ENGINE.”

MOTOR TREND NEW CAR BUYERS GUIDE, 2001/2002 FALL EDITION

PRIVATE LABEL

The Outback L.L.Bean Edition is custom tailoring in a world of off-the-rack vehicles. Beneath amenities like standard automatic climate control and the L.L.Bean signature interior is true substance: the power of a 212-horsepower, 6-cylinder DOHC engine, the control and security of Subaru AWD and standard limited-slip rear differential. For peace of mind, the L.L.Bean Carefree Performance Protection Package provides for routine maintenance of the vehicle and safeguards against trip interruption expenses for the first 3 years or 36,000 miles, whichever occurs first.*



*Please see dealer for additional details.



Exclusive to the L.L.Bean Edition is the luxury of two-tone leather-trimmed upholstery bearing the L.L.Bean insignia. Adding to the richness are embroidered front floor mats and a mahogany wood and leather-wrapped steering wheel designed by MOMO. For added comfort, the rear seat features a fold-down center armrest.

Outback H6-3.0 L.L.Bean Edition shown in Timberline Green Pearl/Titanium Pearl

INSIDER INFORMATION. EVEN THOUGH THE H6-3.0 IS THE MOST POWERFUL OUTBACK AVAILABLE, AND VDC ONE OF THE MOST ADVANCED VEHICLE DYNAMICS CONTROL SYSTEMS ON THE MARKET, THERE IS MORE. FOR CONCERT-HALL QUALITY, THE McIntOSH PREMIUM AM/FM/WEATHERBAND/CD/CASSETTE AUDIO SYSTEM STARTS WITH 11 SPEAKERS IN 7 LOCATIONS. POWER IS PROVIDED BY A SEPARATE 5-CHANNEL McIntOSH AMPLIFIER PRODUCING 200 WATTS AND FEATURING A SOPHISTICATED 6-BAND, 4-CHANNEL PARAMETRIC EQUALIZER. EXCLUSIVE McIntOSH POWERGUARD® AND LD/HP® TECHNOLOGIES PROVIDE UNSURPASSED AUDIO SOUND CLARITY WITH LOW DISTORTION AND HIGH POWER HANDLING.



Outback H6-3.0VDC shown in Regatta Red Pearl/Titanium Pearl



Only the best. The VDC system features an indicator light to tell you it's doing its magic. The audiophile-quality McIntosh System features an AM/FM/Weatherband/cassette with single-disc CD player, 11 speakers in 7 locations, and 200 watts of maximum power. The powerful horizontally opposed 6-cylinder H6-3.0 engine features a DOHC design and innovative variable-controlled intake manifold and exhaust system.

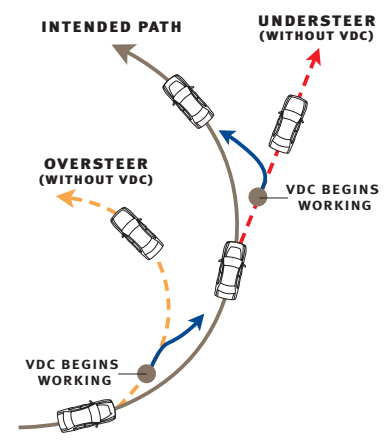
Outback H6-3.0 VDC Sedan and Wagon

IF SUBARU AWD IS SO GOOD, WHY ADD VDC? FOR SUBARU, EXCEPTIONAL VEHICLE DEVELOPING NEW TECHNOLOGIES TO FURTHER ADVANCE THE STATE OF THE ADVANCED VEHICLE CONTROL SYSTEM AVAILABLE TODAY. AND BECAUSE WE CONTINUE TO LOOK FORWARD TO EXPAND THE BOUNDARIES OF SAFETY,

THE MOST ADVANCED VEHICLE FROM THE COMPANY THAT WROTE

VDC

FOR AWD



Subaru VDC helps the driver maintain directional control under all driving conditions. Using inputs from the steering angle, yaw rate, lateral g-force and other sensors, the VDC system monitors vehicle stability

and continuously compares it to the driver's intended path. If VDC detects instability, such as oversteer or understeer, it applies light brake pressure to a select wheel(s) to help restore control. Subaru VDC, unlike some other manufacturers' stability control systems, allows the driver a wider range of control for greater driving pleasure.

CONTROL IS A PROCESS, NOT A RESULT. WE ARE CONSTANTLY STUDYING AND ART IN VEHICLE PERFORMANCE AND SAFETY. AND THAT'S WHY VDC IS THE MOST CONTROL IS THE HEART OF OUR PHILOSOPHY OF ACTIVE DRIVING, ACTIVE SAFETY, CONTROL AND PERFORMANCE THAT ONLY SUBARU AWD CAN OFFER.

DYNAMIC CONTROL SYSTEM THE BOOK ON VEHICLE CONTROL.

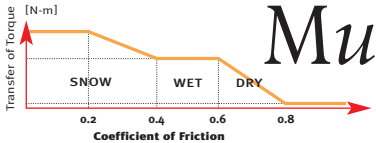
“...THE [OUTBACK H6-3.0 VDC] IS STATE OF THE ART IN TERMS OF ITS VEHICLE DYNAMICS CONTROL STABILITY PACKAGE.”

CAR AND DRIVER, JANUARY 2001

WHAT DOES VDC MEAN TO YOU?

AWD (VTD) Coupled with the high-output H6 boxer engine, Variable Torque Distribution (VTD) All-Wheel Drive maintains a slight rear wheel drive bias (45% front and 55% rear) under normal conditions for more of a performance driving feel. Using new, advanced Surface Friction Estimation Technology (SFET), VTD All-Wheel Drive actually evaluates current road conditions and adjusts the distribution of torque between the front and rear wheels for optimum handling, control and traction for every road condition. The SFET system continually estimates the coefficient of friction (μ), or how much traction is available for the cur-

rent road conditions, based on inputs from the steering angle, yaw rate and other sensors. As road conditions go from dry to wet to snow, the coefficient of friction is reduced, so the VTD All-Wheel Drive system transfers torque to provide maximum traction by coupling the center differential. At higher levels of friction, the system transfers torque to place emphasis on handling performance by uncoupling the center differential.



**“NOT ONLY IS THE NEW ENGINE POTENT, BUT IT’S EXTREMELY SMOOTH,
BETTERING MOST V6 ENGINES.”**

**CAR BUYER’S GUIDE PRESENTS #18,
*CONSUMER REVIEW, 2001 CARS SNEAK PREVIEW***

WE HAVE SEEN THE FUTURE. IT’S UNDER CONTROL.

We’re committed to exceptional vehicle control. Ironically, we couldn’t control ourselves when it came to the H6-3.0 VDC. We gave it a powerful 212-horsepower, 6-cylinder boxer engine and the ultimate security of the Subaru Vehicle Dynamics Control (VDC) system that responds to adverse road conditions by helping to control the sideways movement of the vehicle. Inside, an automatic climate control system, leather-trimmed upholstery, MOMO mahogany wood and leather-wrapped steering wheel, and 8-way power driver’s seat. And the crowning touch: an audiophile-quality McIntosh premium sound system.



All that’s good about Outback H6-3.0 VDC Sedan is even better with the added practicality of the available Wagon body style.

“ANYBODY WHO WOULD CHOOSE A TIPPY TRUCK OVER A CAR LIKE THIS HAS SOME STRANGE PRIORITIES.”

CAR AND DRIVER, JANUARY 2001

ACTIVE SAFETY. PASSIVE SAFETY.

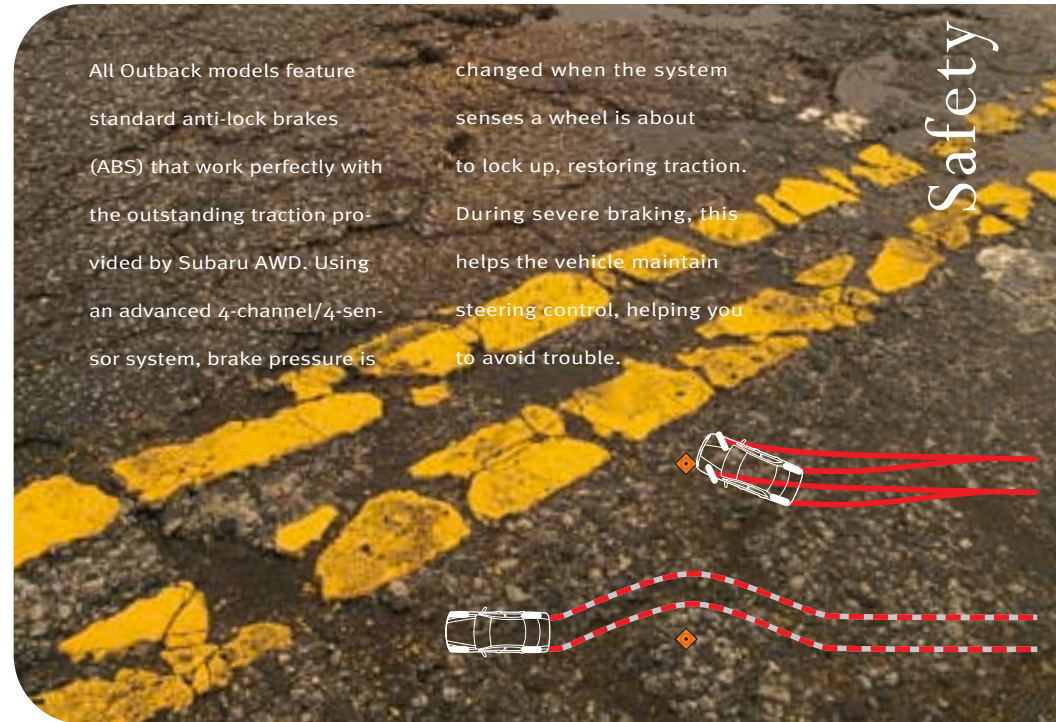


Every Subaru is designed to avoid trouble by giving you exceptional control in even the worst conditions. Active Safety means going where you want to go and avoiding where you don't. The same features that make the Outback so enjoyable to drive also make it extremely safe. Standard full-time AWD, responsive handling and 4-channel/4-sensor anti-lock brakes help you avoid harm. And that added control translates into a true feeling of confidence when you're behind the wheel. When trouble is unavoidable, an advanced Passive Safety system is there to help protect you.

The best way to avoid an object is to see it first. That's why every Subaru takes advantage of its boxer engine design for a low hood line, a low beltline and large windows for a panoramic view.



All Outback models have a number of child security features including child safety rear door locks, a uniform child safety seat anchorage system and child safety seat tether anchors.



All Outback models feature standard anti-lock brakes (ABS) that work perfectly with the outstanding traction provided by Subaru AWD. Using an advanced 4-channel/4-sensor system, brake pressure is

changed when the system senses a wheel is about to lock up, restoring traction. During severe braking, this helps the vehicle maintain steering control, helping you to avoid trouble.

Many of our competitors are now scrambling to offer at least one model with All-Wheel Drive. We think that's a great start. Now, if they'd add a boxer engine and an AWD design that keeps the center of gravity lower to the ground for responsive, confident handling even in the most severe conditions—like every Subaru—they'd really have something.

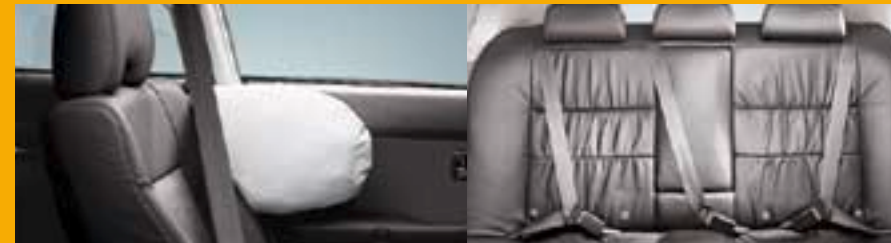
Safety & Security

EVERYONE DESERVES SAFETY. THAT'S WHY ALL SEATING POSITIONS FEATURE THREE-POINT SEATBELTS. IN CERTAIN TYPES OF COLLISIONS, PRE-TENSIONERS "CINCH" UP THE FRONT SEATBELTS TO HELP HOLD OCCUPANTS IN PLACE, THEN FORCE LIMITERS GRADUALLY RELEASE BELT TENSION TO REDUCE THE MAXIMUM FORCE ON THE TORSO. REAR CHILD SEAT ANCHORS ARE MOUNTED TO THE FLOOR OF THE VEHICLE, MEETING A NEW INTERNATIONAL STANDARD FOR THE INSTALLATION OF SPECIALLY EQUIPPED CHILD SAFETY SEATS. THERE'S EVEN AN INTERNAL CHILD SAFETY TRUNK RELEASE WITH A SELF-ILLUMINATING HANDLE ON THE INSIDE REAR OF THE SEDAN TRUNK LID.

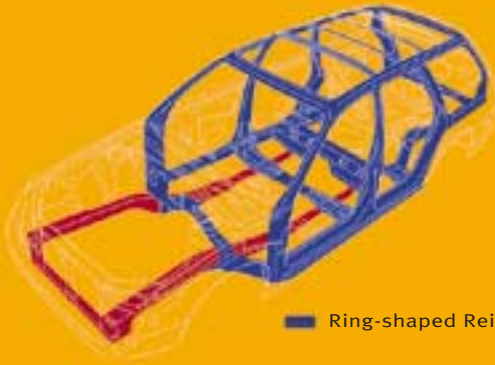
In slick conditions, SUVs can easily overpower their driven wheels, especially in turns. Rear-wheel drive vehicles want to spin. Front-wheel drive vehicles want to continue straight ahead. All-Wheel Drive allows you to track confidently through the turn.



On Outback Limited and H6-3.0 models, front seat side-impact air bags are mounted on the front seats, maintaining optimal placement regardless of seating position.*



Designed for comfort as well as safety, all five seating positions feature three-point seatbelts on all Outback models.



■ Ring-shaped Reinforcement Frames

Ring-Shaped Reinforcement Frames in the front, center and rear of the Outback work with reinforced side sills to disperse the energy of an impact around the passenger compartment, offering added protection for occupants. Interior trim surrounding the windows and pillar areas is specially designed to absorb occupant impact during a collision to help reduce injury.

*Seatbelts must be worn at all times. Children should always be properly restrained in the rear seat.

FINISHING TOUCHES

GENUINE SUBARU ACCESSORIES ARE COVERED BY THE BASIC VEHICLE 3-YEAR/36,000-MILE WARRANTY WHEN INSTALLED AT TIME OF INITIAL PURCHASE. SEE YOUR SUBARU DEALER FOR COMPLETE WARRANTY DETAILS.

1. Performance gauge pack. Displays engine manifold vacuum, voltage and oil temperature.*



2. Armrest extension. Out-of-sight storage for your phone plus added comfort on long trips.†



3. Auto-dimming mirror/compass. Includes electronic compass. Mirror darkens when headlights are detected from rear of vehicle.



4. Igloo® cooler/warmer. Keeps food and beverages either cold or hot. Plugs into power outlet in cargo area. 120 AC adapter available.



5. Car cover. Helps protect the exterior of your Outback.



6. Air filtration system. Helps reduce dust and pollen infiltration within the vehicle cabin area.



7. Trailer hitch (Outback Sport). Heavy-duty rated at 200 lbs. tongue weight, 2,000 lbs. towing capacity (ball not included).



8. UltiMite™ Generator. 23 lbs. of portable, high-output power that is perfect for camping or on-the-spot power needs.



*Available for Outback Sport only.



Remote Keyless Entry is an exceptionally convenient accessory for the Outback Sport (standard on all other models). Features include 2-step unlocking which allows unlocking of driver's door separately, or all doors including the rear gate. Standard panic feature sounds the horn and flashes the parking lights to signal your need for help. For added peace of mind, a security system upgrade kit (standard on H6-3.0 L.L.Bean edition) is available for the remote keyless entry system. The alarm is triggered by opening a door or the rear gate or by applying a physical shock to the vehicle.



9



10

9. Rear spoiler (sedan). Color-matched with integrated brake light.

10. Rear spoiler (wagon). Color-matched and adds a sporty touch to Outback models.



11



12

11. Bike attachment. Transports two bikes in secure fashion.

12. Bike hitch/attachment. Slides into trailer hitch to carry up to two bikes. Designed for easy dismounting of bikes without lifting.**



13

13. Roof cargo basket. Adds increased cargo-carrying capacity.

14. Cross bar set-round. For wider loads. Will accommodate genuine Subaru roof cargo basket and ski, bike and kayak attachments.



14



15

15. Ski attachment. Holds up to 6 pairs of skis or 4 pairs of skis and poles. May also be used to carry snowboards or fishing rods.



16

16. Roof cargo carrier. Adds up to 100 lbs. of lockable storage capacity.

**To avoid blocking rear taillights, use only roof-mounted bike attachments to transport solid wheel bikes.



You can raise the Outback sound system (excluding Outback H6-3.0 VDC)

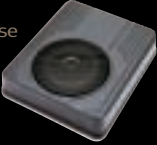


to audiophile-level performance with the optional audio

upgrade components. To Outback models you can add either a single CD player (standard on H6-3.0 models), or for ultimate convenience, a 6-disc in-dash CD changer. Upgraded speakers (standard on Limited models) increase the power output rating over the standard speakers, while the tweeter kit (standard on Limited models) gives increased high-frequency response as well as improved stereo imaging. And for powerful



bass, the subwoofer amplifier adds 120 watts of power and delivers low frequency sound you not only hear but feel.



1. Tweeter kit. Helps enhance high frequency audio.
2. Trailer hitch (wagon). Heavy-duty-rated at 200 lbs. tongue weight, 2,000 lbs. towing capacity (ball not included).
3. Dog guard/compartiment divider (Outback Wagon). Separates pets and cargo from passenger area.*
4. Cargo net. Helps organize Outback Wagon cargo area.
5. Rubber mats. Heavy-gauge, custom-fitted protective mats.
6. Cargo bin. Provides for convenient transportation of various articles.
7. When not in use, cargo bin and net dividers fold down to a nearly flat surface which matches standard cargo tray and optional rubber mats.
8. Rear gate bar. Mounts to rear of wagon door for easy opening and closing.



*Not for use with child seats requiring tether straps.

EVERY OUTBACK COMES EQUIPPED WITH A LONG LIST OF STANDARD FEATURES, BUT THAT DOESN'T MEAN THERE ISN'T ROOM TO TREAT YOURSELF TO SOME SPECIAL ITEMS THAT WILL ADD TO THE FUN. IF YOU'RE DRAWN TO THE OUTBACK, YOU'RE PROBABLY NOT THE RUN-OF-THE-MILL NEW CAR BUYER. AND THE ONLY THING BETTER THAN HAVING A UNIQUE VEHICLE IS MAKING IT UNIQUELY YOUR OWN. TO THAT END, SUBARU SPECIALLY DESIGNS ACCESSORIES THAT ARE MADE TO THE SAME HIGH LEVEL OF QUALITY, DURABILITY AND FIT AND FINISH AS OUR CARS. SEE THE COMPLETE LINE OF OUTBACK ACCESSORIES AT YOUR SUBARU DEALER.



9. Moonroof air deflector (Outback Sedan). Helps reduce wind noise and cut sun glare.
10. Rear window dust deflector (wagon). Helps keep back window clear of dust.
11. Front end cover (full). Helps protect hood from stone chips and provides a sporty appearance.
12. Hood deflector. Durable acrylic plastic design helps protect hood from stone chips.
13. Splash guards. Color matched to Outback Sport and made of durable vinyl to help protect paint finish.
14. Rear differential protector. Helps protect rear differential from rocks and logs.
15. Engine block heater. 400-watt, 115-volt heater.
16. Battery warmer for easier cold-weather starting.

Specifications

ENGINE	<i>Outback Sport</i>	<i>Outback, Outback Limited</i>
Type	Horizontally opposed 4-cylinder with die-cast aluminum-alloy block and aluminum-alloy cylinder heads	
Displacement	2.5 liters (150 cubic inches)	2.5 liters (150 cubic inches)
Horsepower	165 @ 5600 rpm	165 @ 5600 rpm
Torque (lb.-ft.)	166 @ 4000 rpm	166 @ 4000 rpm
Valvetrain	16-valve with single overhead camshaft design (SOHC)	
Fuel System	Sequential multi-port fuel injection system with dual spray injectors	
Ignition System	Low-maintenance distributorless electronic	
Engine Management	ECM Engine Control Module manages fuel injection and ignition systems and features learning, self-diagnosis, limp-home and anti-knock capabilities.	
Fuel Tank Capacity	15.9 gallons	16.9 gallons
2002 EPA Mileage Estimates (mpg, city/highway)	20/28 (manual transmission) 22/27 (automatic transmission)	21/27 (manual transmission) 22/27 (automatic transmission)

DRIVETRAIN

Manual Transmission (Standard)	5-speed manual with overdrive	
Automatic Transmission (Optional)†	4-speed electronically controlled automatic with overdrive This transmission has an automatic power mode which engages with rapid use of the accelerator pedal.	
All-Wheel Drive (AWD)	Full-time AWD system automatically distributes power between front and rear wheels based on traction needs. Manual transmission models have a viscous-coupling locking center differential. Automatic transmission models have an electronically managed continuously variable transfer clutch. Outback and Outback Limited models have a viscous limited-slip rear differential.	

CHASSIS

Body Construction	Unibody construction with front and rear crumple zones 70% of body sheet metal is two-sided galvanized on Outback Sport. 77% of body sheet metal is two-sided galvanized on Outback and Outback Limited.	
Suspension	Fully independent, heavy-duty raised type with coil springs and struts Front: lower L-arms with liquid-filled rear bushings and stabilizer bar Rear: parallel links and stabilizer bar	Fully independent, heavy-duty raised type with coil springs and struts Front: lower L-arms with liquid-filled rear bushings and stabilizer bar Rear: multi-link and stabilizer bar

CHASSIS	<i>Outback Sport</i>	<i>Outback, Outback Limited</i>
Brakes	Power-assisted with dual diagonal 4-channel/4-sensor anti-lock braking system (ABS) Front: 10.7-inch ventilated discs with twin-piston calipers Rear: 9.0-inch drums	hydraulic circuits and Front: 11.4-inch ventilated discs with twin-piston calipers Rear: 11.3-inch discs
Steering	Rack-and-pinion with engine-speed-sensing variable power assist	
Turning Circle, Curb-to-Curb	35.4 feet	36.7 feet
Wheels	16-inch aluminum-alloy	16-inch aluminum-alloy (with gold color accents on Outback Limited models)
Tires	205/55R16 89V M+S all-season radials	225/60R16 97H M+S all-season radials with raised white letters

DIMENSIONS (inches unless otherwise noted)

Wheelbase/Length	99.4/173.4	Wagon: 104.3/187.4 Sedan: 104.3/184.4
Width/Height	67.3/60.2	Wagon: 68.7/63.3 Sedan: 68.7/58.3
Track: front/rear	57.5/57.3	57.9/57.7
Minimum Road Clearance (at curb weight)	6.3	7.3
Headroom: front/rear	39.7/37.3	Wagon: 40.2/39.1 Limited Wagon: 38.5/37.2 Sedan: 38.1/36.6
Legroom: front/rear	42.9/33.7	Wagon: 43.3/34.3 Sedan: 43.3/34.2
Shoulder room: front/rear	52.7/52.9	53.9/53.6
Curb Weight (lbs.)		
Manual Transmission	3050	Wagon: 3425 Wagon with All-Weather Package: 3430 Limited Wagon: 3510
Automatic Transmission	3105	Wagon: 3490 Wagon with All-Weather Package: 3495 Limited Wagon: 3575 Sedan: 3495
EPA Interior Volume (cubic feet)	90.4	Wagon: 95.9 Sedan: 91.4
EPA Cargo Volume (cubic feet)	27.9 (rear seat up) 61.6 (rear seat down—SAE)	Wagon: 34.3 (rear seat up) Wagon: 68.6 (rear seat down—SAE) Sedan: 12.4 (trunk)
Towing capacity (lbs.)**	2000 (Class One)	2000 (Class One)

Features

	<i>Outback Sport</i>	<i>Outback Wagon</i>	<i>Outback Limited Wagon</i>	<i>Outback Limited Sedan</i>
SAFETY FEATURES				
Meets all federal passenger car safety standards	S	S	S	S
All-Wheel Drive (AWD)	S	S	S	S
Viscous limited-slip rear differential	–	S	S	S
4-channel/4-sensor anti-lock braking system (ABS)	S	S	S	S
Dual front air bags (SRS)*	S	S	S	S
Dual stage deployment passenger front air bag	–	S	S	S
Front seat side-impact air bags (SRS)*	–	–	S	S
Daytime running lights	S	S	S	S
Height-adjustable 3-point front seatbelts	S	S	S	S
3-point rear seatbelts for all three seating positions	S	S	S	S
Uniform child safety seat anchorage system	S	S	S	S
Front seatbelt pre-tensioners and force limiters	S	S	S	S
Energy-absorbing collapsible steering column	S	S	S	S
Energy-absorbing front and rear crumple zones	S	S	S	S
Side-impact door beams	S	S	S	S
5-mph impact-absorbing bumpers	S	S	S	S
Child safety rear door locks	S	S	S	S
Internal child safety trunk release	–	–	–	S

INTERIOR FEATURES

Reclining front bucket seats with height-adjustable head restraints	S	S	S	S
Rear seat headrests for all three seating positions	S	S	S	S
Driver's seat lumbar adjustment	–	S	S	S
6-way power driver's seat	–	S	S	S
60/40 split fold-down rear seatback	S	S	S	–
Rear seat fold-down center armrest with trunk pass-through	–	–	–	S
Leather-trimmed upholstery, leather-wrapped steering wheel and shifter handle	–	–	S	S
Woodgrain patterned interior trim	–	S	S	S
Off-delay dome light	S	S	S	S
Overhead console with map lights and sunglasses holder	–	S	–	–
Driver's side visor vanity mirror	S	–	–	–
Dual illuminated visor vanity mirrors	–	S	S	S
Power door locks	S	S	S	S

	<i>Outback Sport</i>	<i>Outback Wagon</i>	<i>Outback Limited Wagon</i>	<i>Outback Limited Sedan</i>
--	----------------------	----------------------	------------------------------	------------------------------

INTERIOR FEATURES (Continued)

Power moonroof with tilt-up and retract ventilation features	–	–	–	S
Dual power moonroofs. Front with tilt-up feature and rear with retract feature	–	–	S	–
Power windows with driver's one-touch auto-down feature	S	S	S	S
Remote keyless entry system	O	S	S	S
Cruise control	S	S	S	S
Dual cup holders	S	–	–	–
Four cup holders—two in front, two in rear	–	S	S	S
Air conditioning with 4-speed fan	S	S	S	S
Ambient temperature gauge and dual-mode digital trip odometer	S	S	S	S
Rear window defogger with timer	S	S	S	S
AM/FM 80-watt stereo with single-disc CD player and 4 speakers	S	–	–	–
AM/FM/ Weatherband 80-watt stereo with logic control cassette and 4 speakers	–	S	–	–
AM/FM/ Weatherband 80-watt stereo with logic control cassette, single-disc CD player and 8 speakers (6 speakers in Outback Limited Sedan)	–	–	S	S
In-glass antenna	–	S	S	S
Retractable cargo area cover, rear 12-volt power outlet, removable rubberized cargo area tray/mat, cargo hooks	S	S	S	–
All Weather Package: Dual-mode heated front seats, heated exterior mirrors, windshield wiper de-icer	–	O	S	S

EXTERIOR FEATURES (Highlights)

16-inch aluminum-alloy wheels	S	S	S	S
Two-tone paint with body-side molding	S	–	–	–
Two-tone paint with body-side cladding	–	S	S	S
Body color door handles	S	–	–	–
Body color door handles and mirrors	–	S	S	S
Multi-reflector fog lights	S	–	–	–
Multi-reflector fog lights with stone shields	–	S	S	S
Dual-power fold-away mirrors	S	–	–	–
Large dual-power fold-away mirrors	–	S	S	S
Variable intermittent windshield wipers	S	S	S	S
Intermittent rear window wiper/washer	S	S	S	–
Protective rear bumper step pad	S	S	S	–
Roof rails with cross bars	S	S	S	–

S = Standard / O = Optional / – = Not Available

Specifications

ENGINE	<i>H6-3.0 L.L.Bean Edition</i>	<i>H6-3.0 Sedan</i>	<i>H6-3.0 VDC Sedan</i>	<i>H6-3.0 VDC Wagon</i>
Type	Horizontally opposed high-output 6-cylinder with die-cast aluminum-alloy block and aluminum-alloy cylinder heads			
Displacement	3.0 liters (183 cubic inches)			
Horsepower	212 @ 6000 rpm			
Torque (lb.-ft.)	210 @ 4400 rpm			
Valvetrain	24-valve with dual overhead camshaft design (DOHC)			
Fuel System	Sequential multi-port fuel injection with dual spray injectors			
Ignition System	Direct ignition system; platinum-tipped spark plugs			
Engine Management	ECM Engine Control Module manages fuel injection and ignition systems and features learning, self-diagnosis, limp-home and anti-knock capabilities.			
Fuel Tank Capacity	16.9 gallons			
2002 EPA Mileage Estimates (mpg, city/highway)	20/26			

DRIVETRAIN

Automatic Transmission	4-speed electronically controlled automatic with overdrive This transmission has an automatic power mode which engages with rapid use of the accelerator pedal.
All-Wheel Drive (AWD)	Full-time AWD system automatically distributes power between front and rear wheels based on traction needs. L.L.Bean Edition and H6-3.0 Sedan models have an electronically managed continuously variable transfer clutch and limited-slip rear differential. H6-3.0VDC models have a Vehicle Dynamics Control (VDC) System with Variable Torque Distribution (VTD). VTD utilizes a planetary center differential in conjunction with an electronically managed continuously variable transfer clutch.

CHASSIS

Body Construction	Unibody construction with front and rear crumple zones 77% of body sheet metal is two-sided galvanized.
Suspension	Fully independent, heavy-duty raised type with coil springs and struts Front: lower and L-arms with liquid-filled rear bushings and stabilizer bar Rear: multi-link and stabilizer bar
Steering	Rack-and-pinion with engine-speed-sensing variable power assist
Turning Circle, Curb-to-Curb	36.7
Wheels	16-inch aluminum-alloy
Tires	225/60R16 97H M+S all-season radials with raised white letters
Brakes	Power-assisted with dual diagonal hydraulic circuits and 4-channel/4-sensor anti-lock braking system (ABS) Front: 11.4-inch ventilated discs with twin-piston calipers Rear: 11.3-inch discs

DIMENSIONS (inches unless otherwise noted)	<i>H6-3.0 L.L.Bean Edition</i>	<i>H6-3.0 Sedan</i>	<i>H6-3.0VDC Sedan</i>	<i>H6-3.0VDC Wagon</i>
Wheelbase/Length	104.3/187.4	104.3/184.4	104.3/184.4	104.3/187.4
Width/Height	68.7/63.3	68.7/58.3	68.7/58.3	68.7/63.3
Track: front/rear	57.9/57.7	57.9/57.7	57.9/57.7	57.9/57.7
Minimum road clearance (at curb weight)	7.9	7.9	7.9	7.9
Headroom: front/rear	38.5/37.2	38.1/36.6	38.1/36.6	38.5/37.2
Legroom: front/rear	43.3/34.3	43.3/34.2	43.3/34.2	43.3/34.3
Shoulder room: front/rear	53.9/53.6	53.9/53.6	53.9/53.6	53.9/53.6
Curb Weight (lbs.)	3715	3610	3630	3715
EPA Interior Volume (cubic feet)	95.9	91.4	91.4	95.9
EPA Trunk Volume (cubic feet)	—	12.4	12.4	—
EPA Cargo Volume: Rear seat up (cubic feet)	34.3	—	—	34.3
EPA Cargo Volume: Rear seat down—SAE (cubic feet)	68.6	—	—	68.6
Towing capacity (lbs.)** (Class One) 2000	2000	2000	2000	2000

SAFETY FEATURES

Meets all federal passenger car safety standards	S	S	S	S
All-Wheel Drive (AWD)	S	S	S	S
Viscous limited-slip rear differential	S	S	—	—
Vehicle Dynamics Control (VDC) System	—	—	S	S
VDC off switch	—	—	S	S
4-channel/4-sensor anti-lock braking system (ABS)	S	S	S	S
Dual front air bags (SRS)*	S	S	S	S

COLOR AND TRIM

	Black Granite Pearl/Titanium Pearl	Deep Sapphire Pearl/Titanium Pearl	Timberline Green Pearl/Titanium Pearl	Regatta Red Pearl/Titanium Pearl	Wintergreen Metallic/Titanium Pearl	White Frost Pearl/Titanium Pearl	Aspen White/Graystone Metallic	Midnight Black Pearl/Graystone Metallic	Platinum Silver Metallic/Graystone Metallic	Savanna Green Metallic/Graystone Metallic	Sedona Red Pearl/Graystone Metallic
KEY											
1 = Gray Leather-trimmed											
2 = Beige Two-tone Leather-trimmed											
3 = Gray Moquette											
4 = Beige Moquette											
5 = Beige Leather-trimmed											
6 = Medium Gray Flat Woven											
OUTBACK SPORT	—	—	—	—	—	—	6	6	6	6	6
OUTBACK	—	3	4	4	4	4	—	—	—	—	—
OUTBACK LIMITED	1	—	5	5	5	5	—	—	—	—	—
OUTBACK H6-3.0 SEDAN	1	—	5	5	5	5	—	—	—	—	—
OUTBACK H6-3.0 VDC	1	—	5	5	5	5	—	—	—	—	—
OUTBACK H6-3.0 L.L.BEAN EDITION	2	—	2	2	2	2	—	—	—	—	—

See facing page for samples of interior and exterior colors

Features

	H6-3.0 L.L.Bean Edition	H6-3.0 Sedan	H6-3.0 VDC Sedan	H6-3.0 VDC Wagon
SAFETY FEATURES (Continued)				
Dual-stage deployment passenger front air bag	S	S	S	S
Front seat side-impact air bags (SRS)*	S	S	S	S
Daytime running lights	S	S	S	S
Height-adjustable 3-point front seatbelts	S	S	S	S
Front seatbelt pre-tensioners and force limiters	S	S	S	S
3-point rear seatbelts for all three seating positions	S	S	S	S
Energy-absorbing collapsible steering column	S	S	S	S
Energy-absorbing front and rear crumple zones	S	S	S	S
5-mph impact-absorbing bumpers	S	S	S	S
Side-impact door beams	S	S	S	S
Uniform child safety seat anchorage system	S	S	S	S
Child safety rear door locks	S	S	S	S
Internal child safety trunk release	–	S	S	–

INTERIOR FEATURES

Reclining front bucket seats with height-adjustable head restraints	S	S	S	S
Driver's seat lumbar adjustment	S	S	S	S
8-way power driver's seat	S	S	S	S
Rear seat headrests for all three positions	S	S	S	S
60/40 split fold-down rear seatback	S	–	–	S
Rear seat fold-down center armrest with trunk pass-through	–	S	S	–
Rear seat center armrest	S	–	–	S
Leather-trimmed upholstery	–	S	S	S
Two-tone leather-trimmed upholstery	S	–	–	–
Leather-wrapped shifter handle	S	S	S	S
Mahogany wood and leather-wrapped steering wheel	S	S	S	S
Woodgrain patterned interior trim	S	S	S	S
Tilt-adjustable steering column	S	S	S	S
Dual illuminated visor vanity mirrors	S	S	S	S
Glove box light and cargo/trunk area light	S	S	S	S
Power door locks	S	S	S	S
Cruise control	S	S	S	S
Power moonroof: with tilt-up and retract ventilation features	–	S	S	–
Dual power moonroofs. Front with tilt-up feature and rear with retract feature	S	–	–	S
Power windows with driver's one-touch auto-down feature	S	S	S	S
Remote keyless entry system	–	S	S	S
Remote keyless entry with security system	S	O	O	O

	H6-3.0 L.L.Bean Edition	H6-3.0 Sedan	H6-3.0 VDC Sedan	H6-3.0 VDC Wagon
INTERIOR FEATURES (Continued)				
Dual-mode digital trip odometer	S	S	S	S
Ambient temperature gauge	S	S	S	S
Automatic climate control system	S	S	S	S
Rear seat heater ducts	S	S	S	S
Air filtration system	S	S	S	S
Auto-dimming rearview compass mirror	S	O	O	O
Four cup holders—two in front, two in rear	S	S	S	S
AM/FM/Weatherband 80-watt stereo with logic control cassette, single-disc CD player, 8 speakers and in-glass antenna (6 speakers in Outback H6-3.0 Sedan)	S	S	–	–
McIntosh premium audio system: AM/FM/Weatherband stereo cassette with single-disc CD player, 11 speakers in 7 locations, power amp and in-glass antenna, 200-watt maximum output	–	–	S	S
Retractable cargo area cover, rear 12-volt power outlet, removable rubberized cargo area mat, cargo hooks	S	–	–	S
All-Weather Package: Dual-mode heated front seats, heated exterior mirrors, windshield wiper de-icer	S	S	S	S

EXTERIOR FEATURES (Highlights)

16-inch aluminum-alloy wheels	S	S	S	S
Variable intermittent windshield wipers	S	S	S	S
Intermittent rear window wiper/washer	S	–	–	S
Large dual-power fold-away mirrors	S	S	S	S
Body color door handles and mirrors	S	S	S	S
Two-tone paint with body-side cladding	S	S	S	S
Multi-reflector halogen fog lights with stone shields	S	S	S	S
Protective rear bumper step pad	S	–	–	S
Roof rails with cross bars	S	–	–	S

Warranties^{††}

Basic Warranty	3 years or 36,000 miles, whichever comes first
Powertrain Warranty	5 years or 60,000 miles, whichever comes first
Rust Perforation Warranty	5 years, unlimited mileage

*The Supplemental Restraint System (SRS) (air bags) affords the driver and front passenger additional protection in a moderate to severe frontal or (when equipped with front-seat side-impact air bags) a side-impact collision. This system provides supplemental protection only, and seatbelts must be worn in order to avoid injuries to out-of-position occupants upon bag deployment and to provide the best combined protection in a serious accident. Children should always be properly restrained in the rear seat.

** See Owner's Manual for detailed instructions you should follow when towing a trailer.

† Standard on Outback Limited Sedan.

†† For complete warranty information, including coverage and exclusions, see your Subaru dealer.

Specifications in this brochure are based on the latest product information available at the time of publication. Some equipment shown in photography in this brochure is optional at extra cost. Specific options may be available only in combination with other options. Specific combinations of equipment or features may vary from time to time and by geographic area. Certain accessories and equipment may not be available at the time of publication. Subaru of America, Inc., reserves the right to change or discontinue at any time, without notice, prices, colors, materials, equipment, accessories, specifications, models and packages without incurring any obligation to make the same or similar changes on vehicles previously sold. Colors shown may vary due to reproduction and printing processes. For more information, contact your Subaru dealer. Subaru, Outback, Impreza, L.L.Bean, MOMO, "The Beauty of All-Wheel Drive." and "The World's First Sport Utility Wagon." are registered trademarks.

S = Standard / O = Optional / – = Not Available

Colors & Fabrics

EXTERIOR

Aspen White/
Graystone Metallic

Black Granite Pearl/
Titanium Pearl

Midnight Black Pearl/
Graystone Metallic

Deep Sapphire Pearl/
Titanium Pearl

Platinum Silver Metallic/
Graystone Metallic

Regatta Red Pearl/
Titanium Pearl

Savanna Green Metallic/
Graystone Metallic

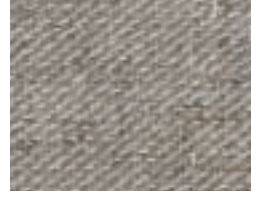
Timberline Green Pearl/
Titanium Pearl

Sedona Red Pearl/
Graystone Metallic

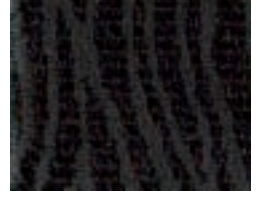
White Frost Pearl/
Titanium Pearl

Wintergreen Metallic/
Titanium Pearl

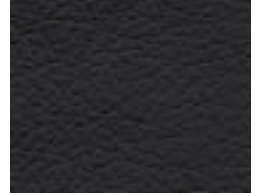
INTERIOR



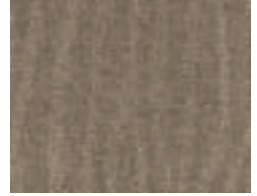
Medium Gray Flat Woven



Gray Moquette



Gray Leather



Beige Moquette



Beige Leather



Beige Two-tone Leather

WE MIGHT NEED A LARGER TROPHY CASE. THE 2001



2001 IntelliChoice Award
The Best Overall Value of the Year
Midsize/Large Wagon Category

OUTBACK WAGON WAS DISTINGUISHED AS "THE BEST

OVERALL VALUE OF THE YEAR" IN THE MIDSIZE/LARGE

WAGON CATEGORY BY INTELICHOICE.¹ THE OUTBACK

LIMITED SEDAN WAS ALSO SELECTED BY INTELICHOICE AS



"A BEST OVERALL VALUE OF THE YEAR" IN THE

2001 IntelliChoice Award
A Best Overall Value of the Year
Compact over \$16,500 Category

COMPACT OVER \$16,500 CATEGORY. AND NOT ONLY DID THE

SUBARU OUTBACK WIN THE NEW ENGLAND MOTOR PRESS

ASSOCIATION'S WINTER VEHICLE VALUE AWARD IN 2000,

IN 2001 IT WAS NAMED "BEST IN CLASS" IN IT'S



New England Motor Press Association
2001 Winter Vehicle Award
Best-In-Class

CATEGORY FOR ALL-WEATHER WAGONS UNDER \$30,000.

Accolades

¹ 2001 The Complete Car Cost Guide™, IntelliChoice® Inc., www.intellichoice.com

WE'VE SPENT MORE THAN 25 YEARS PERFECTING THE SUBARU

ALL-WHEEL DRIVING SYSTEM — AN INTEGRAL PART OF EVERY

SUBARU. OUR PHILOSOPHY OF UNDETERRED DEDICATION

IS SHARED BY SUBARU DRIVERS. SUBARU DRIVERS UNDER-

STAND THAT THE BEAUTY OF ALL-WHEEL DRIVE EXTENDS

WAY BEYOND THE  SNOWY MOUNTAIN

PASS AND THE RAIN-SLICKED HIGHWAY. IT MEANS HAVING A

SAFER, MORE COMFORTABLE RIDE UNDER ANY ROAD CONDITION,

EVERY TIME YOU GET BEHIND THE WHEEL. AND WE DON'T

THINK THAT'S TOO MUCH TO ASK. LEARN MORE ABOUT SUBARU

ON THE WEB @ WWW.SUBARU.COM OR CALL 1.800.SUBARU-3.

Subaru is proud to be associated with the American Canoe Association, the National Ski Patrol, Professional Ski Instructors of America, the Subaru Factory Team, the American Cross Country Skiers, the Cross Country Ski Areas Association and the American Association of Snowboard Instructors, as well as the International Mountain Bicycling Association, the Subaru Gary Fisher Mountain Bike Racing Team, the Masters Rowing Association, the Dagger Canoe and Kayak Company, the Executive Women's Golf Association, Leave No Trace and L.L.Bean.



GARY FISHER




L.L.Bean

The Subaru Roadside Assistance Program covers all 2002 Subaru vehicles during the first three years or 36,000 miles, whichever comes first. By calling the toll-free number in the Owner's Information Kit, Subaru owners can take advantage of any of the following benefits:

- 24-hour Roadside Assistance, seven days a week, 365 days a year all throughout the United States.
- Emergency Towing Service to the nearest authorized Subaru dealer.
- Emergency Roadside Assistance for jump starts, gasoline (up to two gallons), flat tire change, emergency lockout service (lost key or key is locked in the vehicle) and emergency fluid replacement.

See your Subaru dealer for details.

Subaru supports the U.S. Forest Service's "Tread Lightly!" organization and urges you to go easy on the environment when you go off-highway. 

©2001 Subaru of America, Inc. MSA 8M0205
 This brochure has been printed in the U.S.A. on recycled paper.